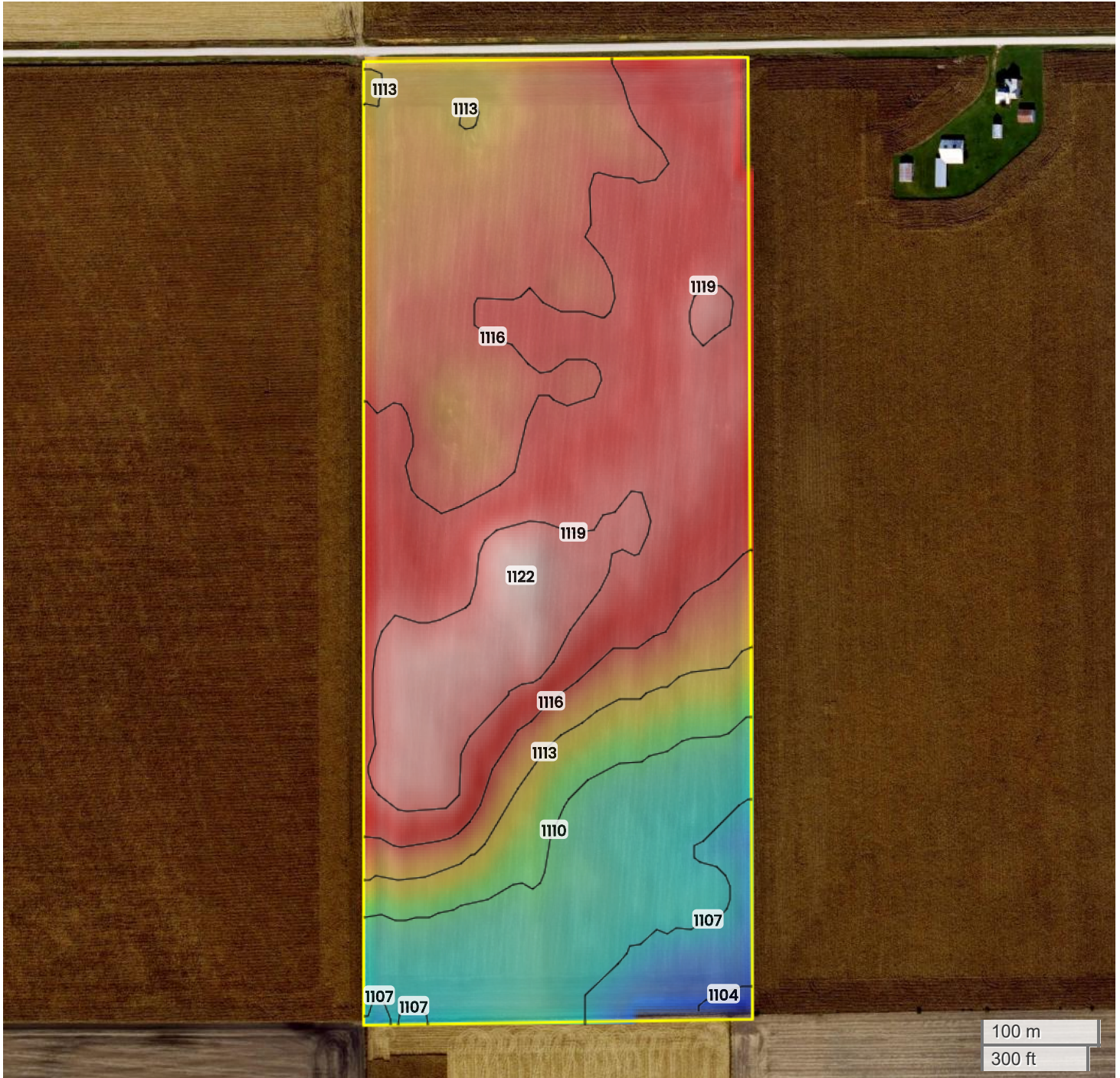




MARY RAMONA LEE TRUST

TOPOGRAPHY



1104 ft

1122 ft



Center: 42.409013, -94.046327

30-88N-27W

Washington Township

Webster County, IA

Source: USGS 10m DEM

Interval(ft): 3

Max: 1122.0 ft

Min: 1104.0 ft

Range: 18.0 ft

Average: 1113.0 ft

FarmWorth, LLC makes no warranties, express or implied, regarding the accuracy of any information provided through FarmWorth.com. User is solely responsible for independently verifying all information prior to use and waives any claims against FarmWorth, LLC arising from inaccuracies in such information.